



User Manual

ProJet 101

Please read and follow the instructions in this manual prior to usage.
(All images shown are for illustration purposes only. Actual product may vary)

Easy & Comfortable Ear Canal Cleaning

Projet Pulsatile Ear Irrigator provides a safe, comfortable, and effective ear canal cleaning experience with its gentle pulsating cyclone wash. Projet Pulsatile Ear Irrigator helps to easily rinse out foreign objects in the ear canal (sand, hair...etc), as well as earwax, pus, otomycosis.

Projet Pulsatile Ear Irrigator is designed to be your #1 tool for your ear canal cleaning work.



Design team led by an ENT specialist with over 30 years of clinical experience

The design and R&D team was led by an ENT specialist with over 100,000 times of ear canal treatment experience. Every small detail of the device, such as water pressure, pulsating frequency, water entry angle, and many other attributes, are all carefully designed based on our extensive treatment experience, to maximize the cleaning efficiency while keeping the ear canal and ear drum safe, and prevent any dizziness during ear irrigation. Every design aspect has been repeatedly tested clinically and readjusted until we achieved the best results.



A brand and quality you can trust

Projet Pulsatile Ear Irrigator goes through the most stringent medical laboratory testing and certification. Projet Pulsatile Ear Irrigator has also been widely tested and used ongoingly with many partnered medical clinics and hospitals since day one of development. All this to ensure we deliver to you the best ear irrigation experience: safe, effective, and comfortable.

Safety Instructions

Usage Precautions

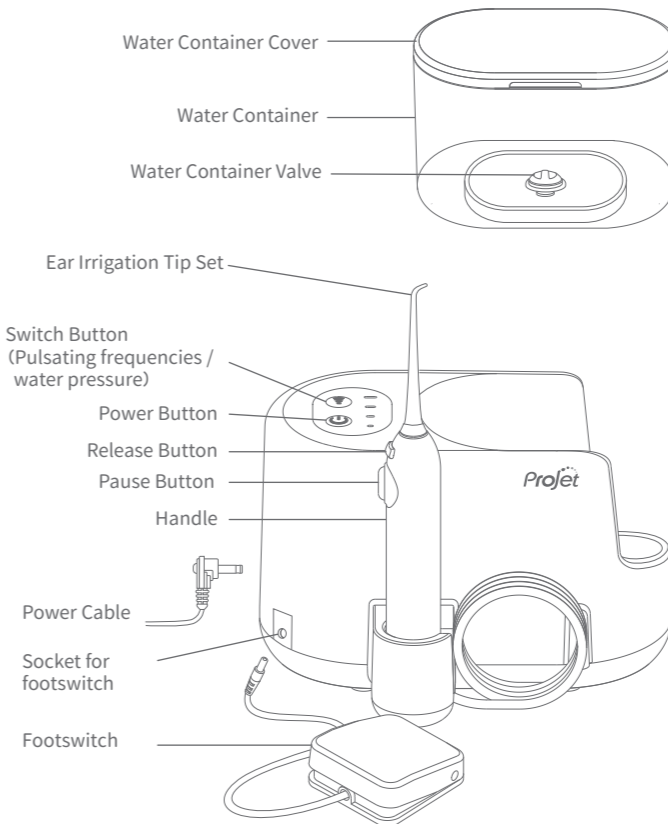
- ⚠ This product is designed for ear irrigation only, do not use for other applications.
- ⚠ This product is intended for use as described in this manual.
- ⚠ Intended applications:
 - Removal of earwax
 - Cleansing ear canal discharge
 - Cleansing otomycosis
 - Removal of foreign objects such as hair or sands
- ⚠ Make sure to check and record any contraindication during history taking prior to ear irrigation:
 - Has the patient had any issue with ear irrigation in the past?
 - Does the patient have eardrum perforation in the past? (If so, check if eardrum is still perforated)
 - Has the patient experienced ear discharge in the past? (If so, check if there is eardrum perforation now, or have had middle ear surgery or ventilation tube insertion)
 - Has the patient had middle ear surgery before? (If so, check the condition of the eardrum: normal, retracted or thinned? Exposure of mastoid cavity? Was the surgery performed within the past 6 months?)
- ⚠ Prior to using this device, check if there's any contraindication. If any of the following contraindication is met, a medical doctor should decide if ear irrigation can be used or not.
 - Patient refuses to perform ear irrigation, or had experienced side effects from ear irrigation.
 - Eardrum is perforated, especially a dry ear without secretion or only a little secretion.
 - Eardrum appears to be very thin or retracted.
 - Had middle or inner ear surgery within the last 6 months.
 - Had ventilation tube insertion in the past, and the tube is still present or the eardrum has not fully healed to normal.
 - Experiencing acute ear canal inflammation; ear canal is swollen or painful, ear canal is wounded or bleeding.
 - Must be extra cautious when dealing with the only hearing ear, where the other ear is total deafness.
- ⚠ Stop the irrigation immediately if the patient experiences any dizziness, ear pain, or bleeding during the process. Consult with a doctor immediately for checkup.
- ⚠ After the irrigation, have a doctor check if any eardrum or ear canal injury.

Machine Operation Warnings

- ⚠ DO NOT rinse or wash the machine directly with water.
- ⚠ DO NOT pour liquid over 60°C / 140°F into the water container, as this may damage the internal components.
- ⚠ For best hygiene practice, we recommend replacing the water container valve every 6 months, or depending on your usage conditions.
- ⚠ After disinfecting the water container with sterilizing solutions, flush out the leftover solution inside the machine components by adding clean water into the water container and running the machine.
- ⚠ Place and store the machine away from edges to prevent it from falling to the ground.
- ⚠ Store away from children to prevent small components being swallowed.
- ⚠ Machine will automatically stop and enter standby mode after running for 5 minutes without any user input.

Product Details

Parts



Input : 100-240VAC 50/60Hz
Output : 12W

Pulsatile Ear Irrigator
(Model : ProJet 101)

Light Indicator



[Sleep Mode] Light Off :
To wake the machine up, press either power or switch button to enter standby mode.



[Standby Mode] Light flashes:
To change water pressure level, press the Switch machine, press the Power button.



[Active Mode] Light ON:
To change water pressure level, press the Switch button. Step on the footswitch for water to come out.

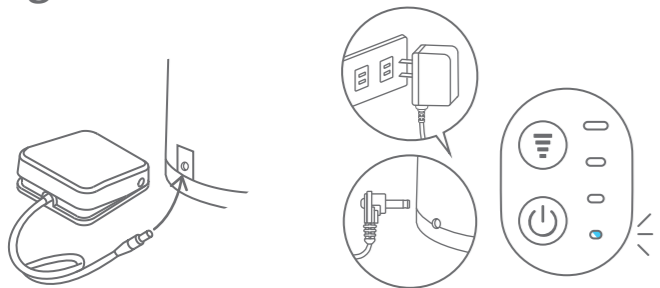


[Water pressure Level]
4 Stronger
3
2
1 Softer

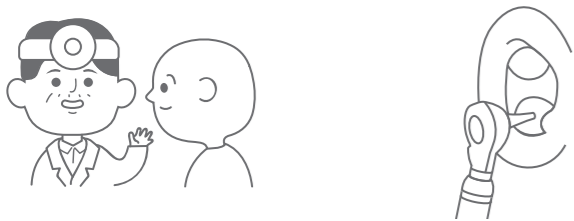
Troubleshooting

Issue	Likely Cause	Solutions
Machine not running (light off)	No Power	Ensure the wall outlet is functional and the power adapter is fully plugged in.
	Sleep Mode	Press either power or switch button to wake the machine.
Machine not running (light flashing)	Standby Mode	Press the power button to enter Operating Mode, and then step onto the footswitch to activate irrigation. (Refer to Usage Instruction)
Machine suddenly stops running (light flashing)	Machine will stop automatically after running continuously for 5 minutes and enter Standby Mode	Press the power button to start the machine.
Machine is running but water is not coming out (light on)	Water container is not properly placed	Ensure no foreign object (ie. tissue) is clogging the container valve, and firmly press down the container until the container valve pops up.
	Air trapped inside the pump	Reinsert the water container, or place the handle in the sink (lower than the machine), let the machine sit for a while for the solution to push the air out.

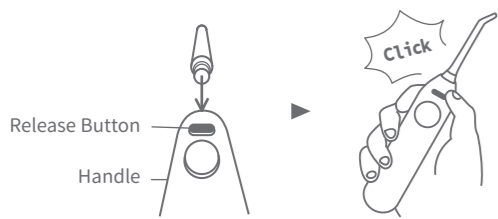
Usage Instruction



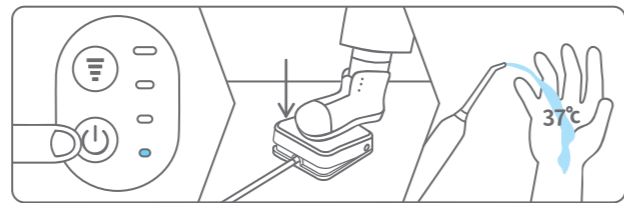
- 1 Connect the footswitch to the machine.
- 2 Plug in the power adapter (machine enters standby mode, light flashing).



- 3 Explain the ear irrigation process to the patient and check for any contraindications (refer to Precaution section)
- 4 Examine patient's ear.



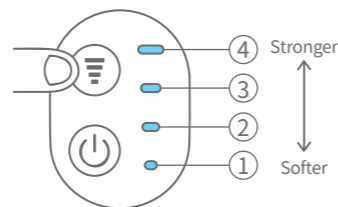
- 5 Connect the ear irrigation tip onto the handle, orient the tip head so the smaller opening faces the same side as the release button. A "click" sound should be heard when fully inserted.



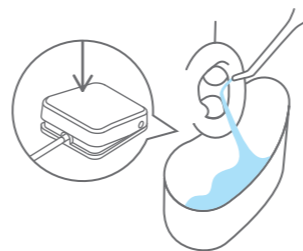
- 6 Prepare 500mL / 16.9oz of clean lukewarm water (38~40°C / 100~104°F). Press the Power Button to enter Activate Mode. Step on the footswitch to initiate the flow. Check first if the water coming out is around 37°C / 99°F. (Readjust container water temperature if the water temperature coming out is not 37°C / 99°F) *See Note 1.



- 7 Patient to hold the Ear wash Basin under the ear and lightly press against the skin. Provide a paper towel to the patient. The patient can tilt their head slightly toward the ear under irrigation. For patients who find the Ear wash Basin too tall, the patient can also turn their head to the other side so the Ear wash Basin doesn't press against their shoulder.



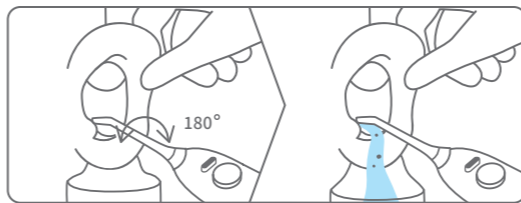
- 8 Select the irrigation water pressure, we recommend starting with the lowest setting and progress upward only if needed. Also depends on the patient's condition.



- 9 Allow the patient to experience the irrigation by stepping onto the footswitch and running the water on the patient's concha first, check if the patient is comfortable with the water temperature and the noise.



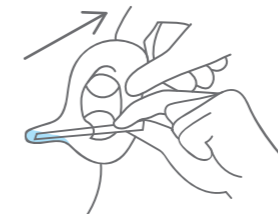
- 10 Lightly pull the patient's upper auricle towards upper rear (*See Note 2), carefully insert the ear irrigation tip. Step on the footswitch to initiate the flow.



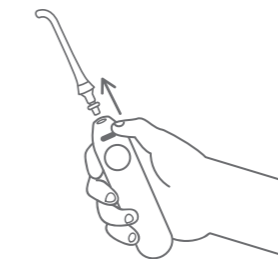
- 11 Slowly rotate the handle to the left and right for more thorough rinse. Water and any removed substances will flow out through the larger opening of the tip head.



- 12 When the irrigation is finished, ask the patient to place the paper towel underneath the ear and retrieve the basin from the patient. Patient can tilt the head to drain out the remaining water, wipe the auricle dry with the paper towel. Patients can see all the rinsed out substances in the basin.



- 13 Once the auricle is dried, gently pull the patient's upper auricle to the upper rear again, carefully and very slowly insert Ear Drying Wick to dry out remaining water near the eardrum. *See Note 3



- 14 Press the Release Button on the handle, remove and dispose the irrigation tip.

Notes:

1. The water temperature coming out of the ear tip could be about 1 ~ 3°C or 1 ~ 5°F degree lower than the water temperature in the container.
2. To help straighten the canal passage, pull the auricle towards the lower rear direction for younger children, and pull towards the upper rear direction for older children and adults.
3. Have a medical specialist check the eardrum and ear canal afterwards.

Product Cleansing Guide



Avoid using strong acidic or strong alkaline cleaning solvents.



Avoid washing the machine directly under the water.



It is recommended to clean the device internals every 3-6 months by adding a natural scale remover and/or sterilization solution into the container. Start the device to allow partial solution to flow out, then stop the device and allow the device to soak for an hour. Irrigate the remaining solution out with the highest setting, and then run the irrigation once more with clear water.